

**i**CON

**i-KEY**

**25-note velocity-sensitive synth-action  
USB MIDI controller keyboard**







Owner's Manual



CN16549



	<p><b>CAUTION</b></p> <p>RISK OF ELECTRIC SHOCK DO NOT OPEN RISQUE DE CHOC ELECTRIQUE NE PAS OUVRIR</p>			<p>The lightning flash with arrowhead symbol within an equilateral triangle is intended to alert the user to the presence of uninsulated dangerous voltage within the product's enclosure, that may be of sufficient magnitude to electric shock to persons. Le symbole clair avec point de foudre à l'intérieur d'un triangle équilatéral est utilisé pour alerter l'utilisateur de la présence à l'intérieur du coffret de voltage dangereux non isolé d'ampleur suffisante.</p>
	<p>CAUTION: TO REDUCE THE RISK OF ELECTRIC SHOCK DO NOT REMOVE COVER (OR BACK) NO USER-SERVICEABLE PARTS INSIDE REFER SERVICING TO QUALIFIED PERSONNEL</p>			<p>exclamation point within an equilateral triangle is intended to alert the user of the presence of important operating and maintenance (servicing) instructions in the literature accompanying the appliance. Le point d'exclamation à l'intérieur d'un triangle équilatéral est employé pour alerter les utilisateurs de la présence d'instructions importantes pour le fonctionnement et l'entretien (service) dans le livret d'instruction accompagnant l'appareil.</p>
	<p>ATTENTION: POUR EVITER LES RISQUES DE CHOC ELECTRIQUE: NE PAS ENLEVER LE COUVERCLE. AUCUN ENTRETIEN DE PIECES INTERIEURES PAR L'USAGER. CONFIER L'ENTRETIEN AU PERSONNEL QUALIFIE.</p> <p>AVIS: POUR EVITER LES RISQUES D'INCENDIE OU D'ELECTROCUTION, N'EXPOSEZ PAS CET ARTICLE A LA PLUIE OU A L'HUMIDITE.</p>			

## Important Safety Instructions

1. Read these instructions.
2. Keep these instructions.
3. Heed all warnings.
4. Follow all instructions.
5. Do not use this apparatus near water.
6. Clean only with dry cloth.
7. Do not block any ventilation openings. Install in accordance with the manufacture's instructions.
8. Do not install near any heat sources such as radiators, heat registers, stoves, or other apparatus (including amplifiers) that produce heat.
9. Only use attachments/accessories specified by the manufacturer.

# Contents

Introduction	
What's in the package .....	1
Register your ICON ProAudio product to your personal account .....	2
Features .....	3
Front Panel Layout .....	4
Side Panel Layout .....	4
Getting Started	
Connecting your iKey keyboard system.....	5
Controller Features and Settings.....	5
Modulation Touchpad.....	5
Pitch Touchpad.....	6
Changing Octaves with Octave buttons.....	6
Sustain button.....	6
Installing iMap™ Software for Mac OSX.....	7-8
Installing iMap™ Software for Windows.....	9-10
Assigning MIDI functions with iMap™.....	11
iMap™ iKey software panel.....	11-12
Restore the factory default settings.....	13
Velocity Curves .....	13
Daisy Chain with iKey or any i-series controllers.....	14
Specifications.....	15
Appendix A	
General MIDI Controller Numbers (MIDI CC'S) .....	16
Services .....	17



## Introduction

Thank you for purchasing the ICON iKey USB MIDI controller. We sincerely trust this product will provide years of satisfactory service, but if anything is not to your complete satisfaction, we will endeavor to make things right.

In these pages, you'll find a detailed description of the features of the iKey, as well as a guided tour through its front and rear panels, step-by-step instructions for their setup and use, and full specifications.

Please register the product on our website at the below link  
[www.iconproaudio.com/registration](http://www.iconproaudio.com/registration):

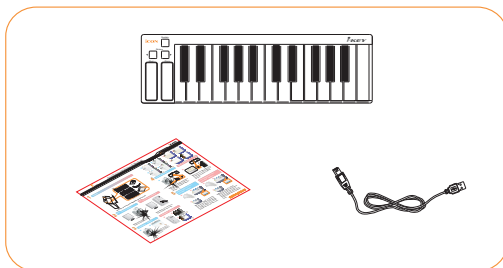
Please follow the step by step procedures. Start by inputting the device's serial number as well as your personal information, etc. By registering your product online, you will be entitled to service and after-sales support at our Help Center by visiting our website at [www.iconproaudio.com](http://www.iconproaudio.com). Also, all the registered products under your account will be listed on your personal product page where you will find updated information such as firmware/driver upgrades, software bundles, user manual downloads, etc. for your device.

As with most electronic devices, we strongly recommend you retain the original packaging. In the unlikely event the product must be returned for servicing, the original packaging (or reasonable equivalent) is required.

With proper care and adequate air circulation, your iKey will operate without any trouble for many years.

## What's in the package?

- iKey USB MIDI controller keyboard x 1
- Quick Start Guide
- USB2.0 Cable



## ***Register your ICON ProAudio product to your personal account***

### **1. Check serial number of your device**

Please go to [http:// iconproaudio.com/registration](http://iconproaudio.com/registration) or scan the QR code below.



Input your device's serial number and the other information on the screen. Click "Submit".

A message will pop up showing your device information such as model name and its serial number - Click "Register this device to my account" or if you see any other message, please contact our after-sales service team

### **2. Log in to your personal account page for existing user or sign up for new user**

Existing user: Please log into your personal user page by inputting your user name and password.

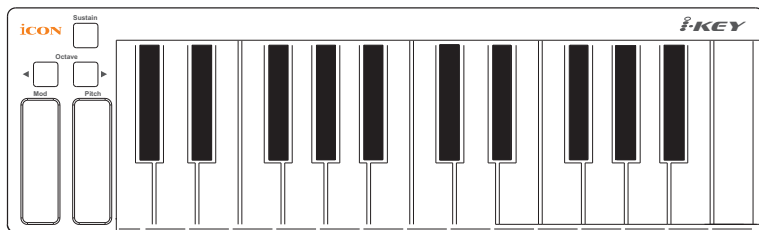
New user: Please click "Sign Up" and fill in all the information.

### **3. Download all useful materials**

All your registered devices under your account will show on the page. Each product will be listed along with all its available files such as drivers, firmware, user manual in different languages and bundled software etc. for download.

Please make sure you have download the necessary files such as driver before you begin device installation.

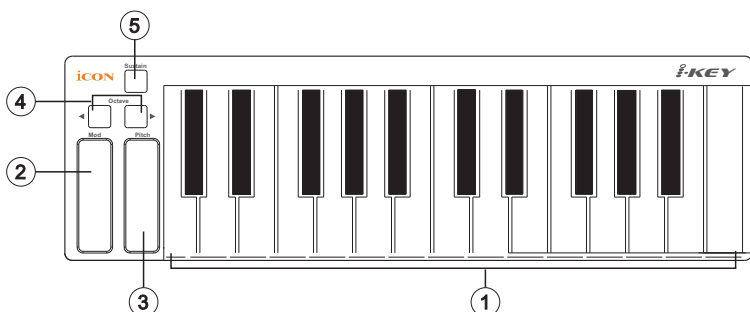
## Features



### Main features include:

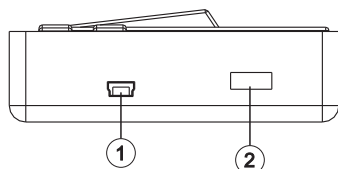
- Extremely compact and designed to match the MacBook™
- 25-note velocity-sensitive synth- action keyboard
- Modulation touchpad
- Pitch touchpad
- Octave up/down
- Sustain button
- Multi velocity curves available for selection
- 2xUSB Connectors for daisy chain with any i-series controllers
- Class-compliant with Windows XP, Vista (32 bit), and Mac OS X
- USB bus-powered
- iMap™ software included for easy mapping of MIDI functions
- An aluminum cover, in different graphic designs and colors, is available as an option.

## Front Panel Layout



- ① **25-note key switches**  
25-note velocity-sensitive synth- action key switch
- ② **Modulation touchpad**  
Touchpad to adjust the modulation effect. It returns to default, "0" when released.
- ③ **Pitch touchpad**  
Touchpad to adjust the pitch bend. It returns to centre, "64" when released.
- ④ **Octave buttons**  
Raise or lower the pitches played on your keyboard.
- ⑤ **Sustain button**  
Hold the button and it works as a sustain pedal.

## Side Panel Layout



- ① **USB port (B-Type)**  
Functions as a MIDI port to your notebook (or computer) and compatible software. Also provides power to your iKey.
- ② **USB port**  
Use to daisy chain with the second unit of iKey or any i-series controllers such as iPad or iControls.

## Getting Started

### Connecting your iKey keyboard system

- ① **Connect the iKey to your Mac/PC via the USB port.**

Choose a USB port on your Mac/PC and insert the wide (flat) end of the USB cable. Connect the cable's small jack end to the iKey. Your Mac/PC should automatically "see" the new hardware and notify you that it is ready to use.

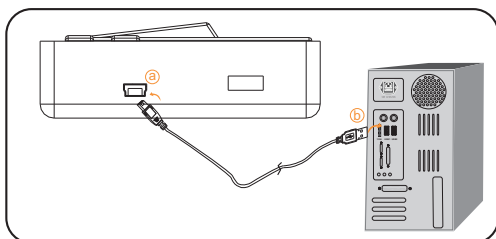


Diagram 1



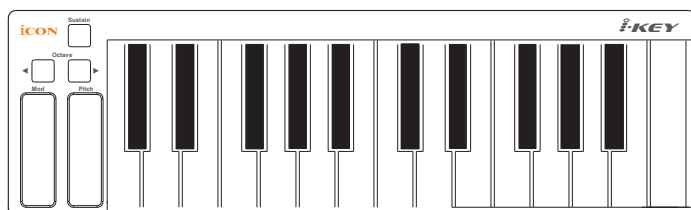
Diagram 2

- ② **Assign the MIDI messages to iKey**

Refer to page 10 for "Assign the MIDI functions with "iMap™" software"

## Controller Features and Settings

Learning how to effectively and creatively use the functions on your iKey is simple.



## Modulation Touchpad

The modulation touchpad is used to control the modulation effect. Slide your finger over the touchpad with an up/down motion to produce a modulation effect. The "0" value effect is located at the bottom of the touchpad and will always return to "0" when released.





## ***Pitch Touchpad***

The pitch touchpad is used to control Pitch Bend effect. Slide your finger over the touchpad with an up/down motion to produce a pitch bend effect. The "64" value effect is located at the centre of the touchpad and will always return to centre when released.

The modulation touchpad is programmable and assignable by the iMap software. For instance, you may want to control L/R panning with the touchpad. To assign this kind of function, look at the MIDI CC implementation chart on page 15. Find the function you want, in this instance Pan, which is MIDI CC 10. Then open your "iMap™" software with iKey connected and assign the touchpad to MIDI CC value to "10" using the pull-down menu. For more details of how to use "iMap™" software, please refer to P.11.

Any linear CC can be assigned and programmed for the touchpad with a similar procedure.

Michael Says, "The touchpad can be used for lots of non-audio mixing functions. If you want to get 'spontaneously artistic' with your mixing, assign a control like pan, reverb, or a VST plug-in effect, to the touchpad and EXPRESS yourself!"

## ***Changing Octaves with Octave buttons***

Pressing either of these buttons will adjust the octave for your keyboard. Press the left button to lower the octave of pitches triggered from the keyboard and the right button to raise the octave. Select 0 if you want the keyboard to play unshifted.

## ***Sustain button***

This button works as a sustain footswitch. You may assign different MIDI functions to the button with "iMap™" software.

# Installing iMap™ Software for MAC OSX

Please follow the procedures below step-by-step to install your iMap™ software to Mac OS X

- ① **Turn on your MAC.**
- ② **Download the Mac iMap from your Personal User Page at [www.iconproaudio.com](http://www.iconproaudio.com)**

After you downloaded the file, please click it to start the installation process.



Diagram 1

- ③ **Setup Wizard appear**

Setup wizard appears, please click "Continue"

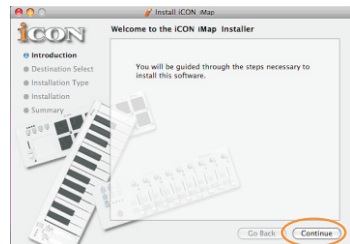


Diagram 2

- ④ **Choose Install Location**

Select a destination to install iMap™ software to Mac OS X, then click "Continue"



Diagram 3

- ⑤ **Change Install Location**

If you want to change install location, please click "Change Install Location" button and select another location or just click "Install" button to continue.

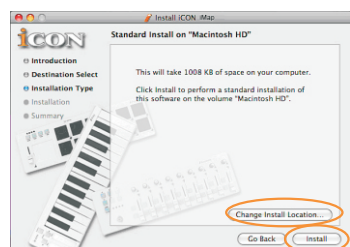


Diagram 4

## Installing iMap™ Software for MAC OSX(continues)

### ⑥ Input Administrator information

To install iMap™ software, you need to input administrator user information, please input the name and password of administrator then click "Install" to continue.



Diagram 5

### ⑦ Installation finished

Click "Close" to complete the iMap™ software installation.

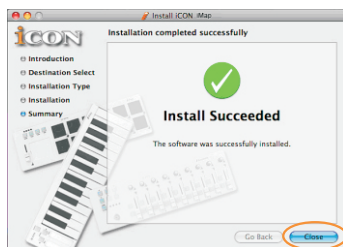


Diagram 6

# Installing iMap™ Software for Windows

Please follow the procedures below step-by-step to install your iMap™ software.

- ① **Turn on your PC.**
- ② **Download the Mac iMap from your Personal User Page at [www.iconproaudio.com](http://www.iconproaudio.com)**

After you downloaded the file, please click it to start the installation process.

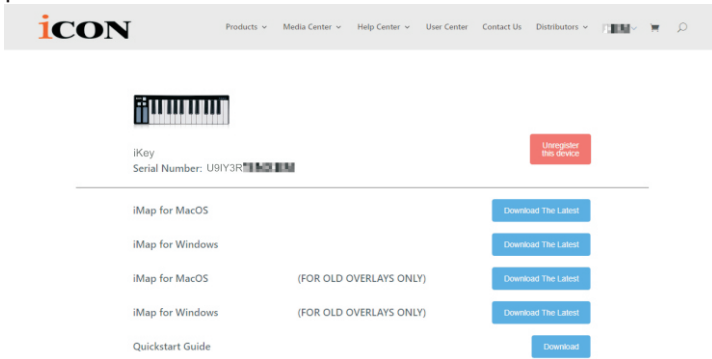


Diagram 1

- ③ **Setup Wizard appear**  
Setup wizard appears, please click "Next"



Diagram 2

- ④ **Choose Install Location**  
Choose your preferred install location for iMap™ or use the default location and click "Next"

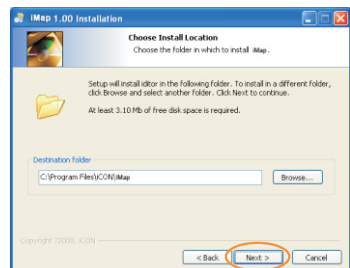


Diagram 3

# Installing iMap™ Software for Windows(continues)

## ⑤ Select shortcut

Select the start menu folder in which you would like to create the iMap™ shortcut. Then click "Next"

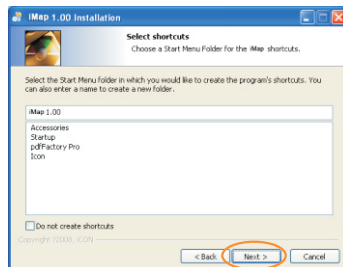


Diagram 4

## ⑥ Create a shortcut on your desktop

Please untick the box if you do not want to place a shortcut icon on your desktop for iMap™, otherwise click "Next"

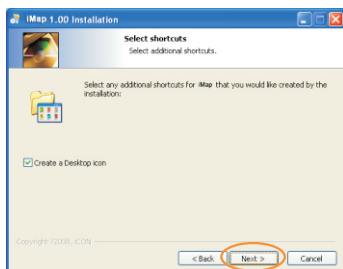


Diagram 5

## ⑦ iMap™ started to install

The iMap™ installation has now started, wait for it to finish. Then click "Finish"



Diagram 6

## ⑧ Installation finished

Click "Finish" to complete the iMap™ software installation.

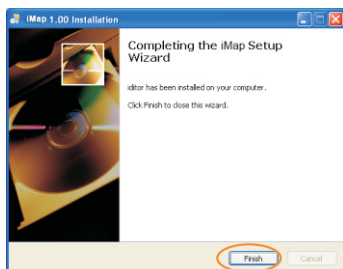


Diagram 7

## Assigning MIDI functions with iMap™

You can use iMap™ to assign the MIDI functions of your iKey easily. Please launch the iMap™ software, a device selector screen will appear as shown in diagram 1. Then click the "iKey" button.



Diagram 1

**Note:** If your iKey is not connected to your Mac/PC, a message of "There are no MIDI input devices" will appear. Please connect iKey to your Mac/PC with the provided USB cable.

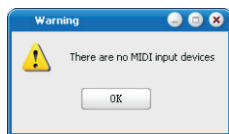
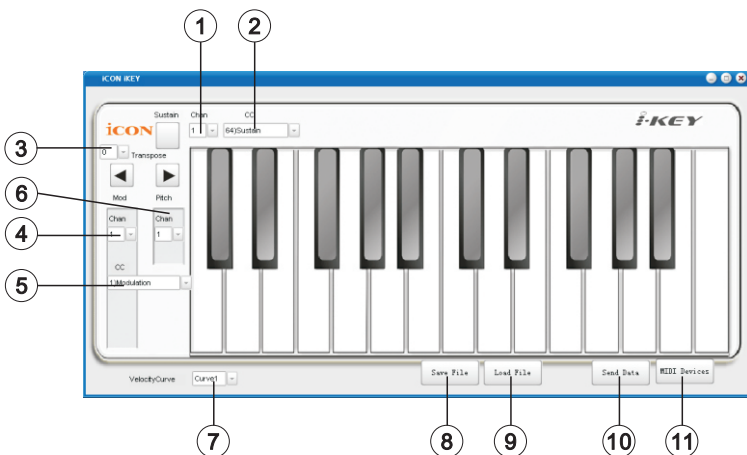


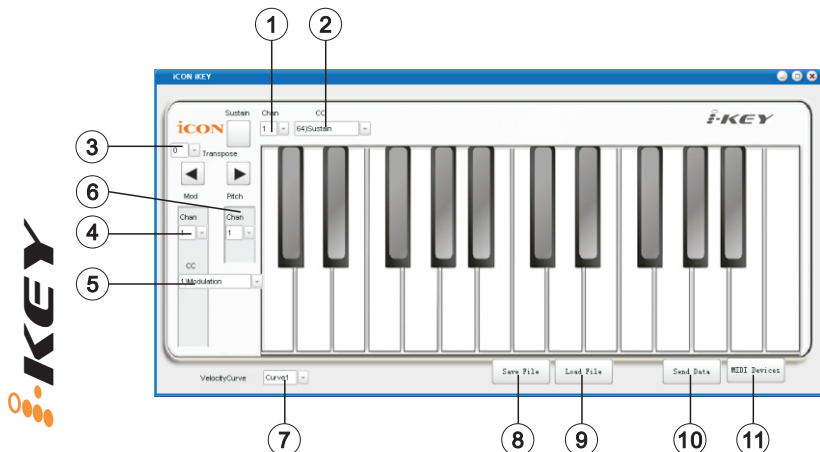
Diagram 2

## iMap™ iKey software panel



- ① **Assign the MIDI channels to the Sustain button**  
Select your desired MIDI channel from 1-16 for the sustain button
- ② **Assign the CC value to the Sustain button**  
Select your desired CC number from 0-127 in the pull-down menu. The default is "64" as for Sustain.
- ③ **Transpose setting**  
Set your preferred transpose setting from +12 to -12 for your iKey.

## iMap™ iKey software panel(continues)



- 4 **Assign the MIDI channels to the Modulation TouchPad**  
Select your desired MIDI channel from 1-16 for the modulation touch pad.
- 5 **Assign the CC value to the Modulation TouchPad**  
Select your desired CC number from 0-127 in the pull-down menu. The default is "01" as for modulation.
- 6 **Assign the MIDI channels to the Pitch bend TouchPad**  
Select your desired MIDI channel from 1-16 for the pitch bend touch pad.
- 7 **Setting the Velocity Curve for your iKey**  
There are 4 difference velocity curves for you to select. Please refer to P.12 for the velocity curve diagrams.
- 8 **"Save file" button**  
Click this button to save your current settings for the iKey. The file is an ".icon" file.
- 9 **"Load file" button**  
Click this button to load a previously saved ".icon" setting file for your iKey.
- 10 **"Send Data" button**  
Click this button to upload the iMap™ software settings to your iKey via USB connection.  
(Note: You must have connected iKey to your Mac/PC, otherwise the settings upload will not be successful.)
- 11 **"MIDI Devices" button**  
Click this button, a MIDI device select window will appear as shown in diagram 1. Please select "ICON iKey" for the MIDI Out Devices.



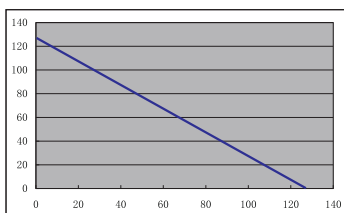
Diagram 1

## Restore the factory default settings

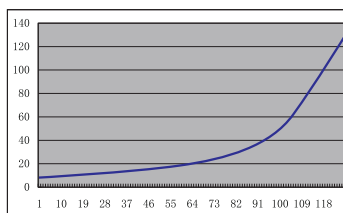
By holding down the buttons "Sustain", "Octave ◀" and "Octave ▶" together, the settings of the iKey will return to its factory default condition.

## Velocity Curves

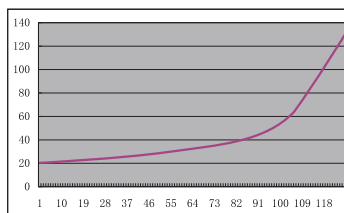
Velocity curves change the way a note played on the keyboard will respond to fast, slow, heavy or light touch. Since different people have different playing styles, the iKey offers four different velocity curves to choose from. Some curves give a faster rise time, or onset of sound. Some give a smooth rise.



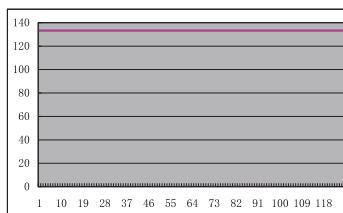
**Velocity Curves 1**



**Velocity Curves 2**



**Velocity Curves 3**



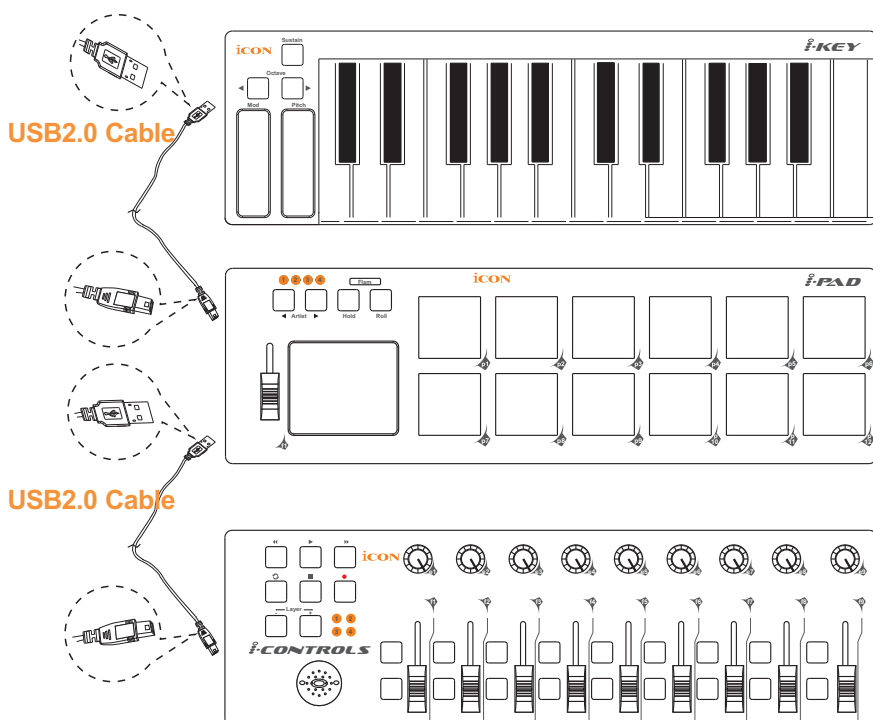
**Velocity Curves 4**  
(Presets all contact with the pads to value of 127)



## Daisy Chain with iKey or any i-series controllers

You may daisy chain up to 3 units of iKey or any i-series controllers.

- ① **Connect the first unit of iKey to your Mac/PC via the USB port.**  
Choose a USB port on your Mac/PC and insert the wide (flat) end of the USB cable and the other small end (B-type USB pack) to iKey.
- ② **Connect the next units of iKey (or iPad/iControls)**  
Insert the wide (flat) end of the USB cable to the first unit of iKey's second USB port and the other small end (B-type USB jack) to the second unit iKey's USB port. By following the same procedure, you may daisy chain with the 3rd unit of iKey (or iPad/iControls).



# Specifications

Connector:	To computer	USB connector (mini B type)
	To i-series controller	USB connector (standard type)
Power supply:	USB bus power	
Current consumption:	100mA or less	
Weight:	0.56kg (1.2lb)	
Dimensions:	325(L) X 99(W) X 33(H)	
	12.78"(L) x 3.78"(W) x 1.25"(H)	



# Appendix A

## General MIDI Controller Numbers (MIDI CC'S)

00	Bank Select	46	Controller 46	92	Tremelo Depth
01	Modulation	47	Controller 47	93	Chorus Depth
02	Breath Control	48	Gen Purpose 1 LSB	94	Celeste (De-tune)
03	Controller 3	49	Gen Purpose 2 LSB	95	Phaser Depth
04	Foot Control	50	Gen Purpose 3 LSB	96	Data Increment
05	PortaTime	51	Gen Purpose 4 LSB	97	Data Decrement
06	Data Entry	52	Controller 52	98	Non-Reg Param LSB
07	ChannelVolume	53	Controller 53	99	Non-Reg Param MSB
08	Balance	54	Controller 54	100	Reg Param LSB
09	Controller 9	55	Controller 55	101	Reg Param MSB
10	Pan	56	Controller 56	102	Controller 102
11	Expression	57	Controller 57	103	Controller 103
12	Effects Controller 1	58	Controller 58	104	Controller 104
13	Effects Controller 2	59	Controller 59	105	Controller 105
14	Controller 14	60	Controller 60	106	Controller 106
15	Controller 15	61	Controller 61	107	Controller 107
16	Gen Purpose 1	62	Controller 62	108	Controller 108
17	Gen Purpose 2	63	Controller 63	109	Controller 109
18	Gen Purpose 3	64	Sustain Pedal	110	Controller 110
19	Gen Purpose 4	65	Portamento	111	Controller 111
20	Controller 20	66	Sostenuto	112	Controller 112
21	Controller 21	67	Soft Pedal	113	Controller 113
25	Controller 25	68	Legato Pedal	114	Controller 114
26	Controller 26	69	Hold 2	115	Controller 115
27	Controller 27	70	Sound Variation	116	Controller 116
28	Controller 28	74	Cut-off Frequency	117	Controller 117
29	Controller 29	75	Controller 75	118	Controller 118
30	Controller 30	76	Controller 76	119	Controller 119
31	Controller 31	77	Controller 77	<b>Channel Mode Messages</b>	
32	Bank Select LSB	78	Controller 78	120	All Sound Off
33	Modulation LSB	79	Controller 79	121	Reset all Controllers
34	Breath Control LSB	80	Gen Purpose 5	122	Local Control
35	Controller 35	81	Gen Purpose 6	123	All Notes Off
36	Foot Control LSB	82	Gen Purpose 7	124	Omni Off
37	PortaTime LSB	83	Gen Purpose 8	125	Omni On
38	Data Entry LSB	84	Portamento Control	126	Mono On (Poly Off)
39	ChannelVolume LSB	85	Controller 85	127	Poly On (Mono Off)
40	Balance LSB	86	Controller 86	<b>Additional Messages</b>	
41	Controller 41	87	Controller 87	128	Pitch Bend Sensitivity
42	Pan LSB	88	Controller 88	129	Fine Tune
43	Expression LSB	89	Controller 89	130	Coarse Tune
44	Controller 44	90	Controller 90	131	Channel Aftertouch
45	Controller 45	91	Reverb Depth		

## Services

If your iKey needs servicing, follow these instructions.

Check our online Help Center at <http://support.iconproaudio.com/hc/en-us>, for information, knowledge, and downloads such as:

1. FAQ
2. Download
3. Learn More
4. Forum

Very often you will find solutions on these pages. If you don't find a solution, create a support ticket at our online Help Center at the link below, and our technical support team will assist you as soon as we can.

Navigate to <http://support.iconproaudio.com/hc/en-us> and then sign in to submit a ticket.

As soon as you have submitted an inquiry ticket, our support team will assist you to resolve the problem with your ICON ProAudio device as soon as possible.



To send defective products for service:

1. Ensure the problem is not related to operation error or external system devices.
2. Keep this owner's manual. We don't need it to repair the unit.
3. Pack the unit in its original packaging including end card and box. This is very important. If you have lost the packaging, please make sure you have packed the unit properly. ICON is not responsible for any damage that occurs due to non-factory packing.
4. Ship to the ICON tech support center or the local return authorization. See our service centers and distributor service points at the link below:

If you are located in US

Send the product to:

North America

Mixware, LLC – U.S. Distributor

11070 Fleetwood Street – Unit F.

Sun Valley, CA 91352; USA

Tel.: (818) 578 4030

[Contact: www.mixware.net/help](http://www.mixware.net/help)

If you are located in Hong Kong

Send the product to:

ASIA OFFICE:

Unit F, 15/F., Fu Cheung Centre,

No. 5-7 Wong Chuk Yueng

Street, Fotan,

Sha Tin, N. T., Hong Kong.

Tel: (852) 2398 2286

Fax: (852) 2789 3947

Email: [info.asia@icon-global.com](mailto:info.asia@icon-global.com)

If you are located in Europe

Send the product to:

Sound Service

GmbH European

Headquarter Moriz-Seeler-Stra

3D-12489 Berlin

Telephone: +49 (0)30 707 130-0

Fax: +49 (0)30 707 130-189

[E-Mail: info@sound-service.eu](mailto:info@sound-service.eu)

5. For additional update information please visit our website at: [www.iconproaudio.com](http://www.iconproaudio.com)



天猫官方旗舰店



天猫店iconproaudio旗舰店

抖音号



抖音iCON艾肯

哔哩哔哩



B站iCONProAudio

微信公众号



微信号iCON-PRO

官方售后QQ



4006311312.114.qq.com

中国地区用户

Twitter



[www.twitter.com/iconproaudio](https://www.twitter.com/iconproaudio)

Instagram



[www.instagram.com/iconproaudio](https://www.instagram.com/iconproaudio)

Facebook



[www.facebook.com/iconproaudio](https://www.facebook.com/iconproaudio)

Youtube



[www.youtube.com/iconproaudio](https://www.youtube.com/iconproaudio)

Website



[www.iconproaudio.com](http://www.iconproaudio.com)

Support



[support.iconproaudio.com](https://support.iconproaudio.com)

Dashboard



[iconproaudio.com/dashboard/](https://iconproaudio.com/dashboard/)

[www.iconproaudio.com](http://www.iconproaudio.com)