

QCon^{Pro}

USB-MIDI Controller Station

**MIDI/Audio control surface with motorized
faders for production**



User manual

<div style="text-align: center; background-color: black; color: white; padding: 5px; font-weight: bold;">CAUTION</div> <div style="display: flex; justify-content: space-around; align-items: center;"> <div style="text-align: center;"> <p>RISK OF ELECTRIC SHOCK DO NOT OPEN RISQUE DE CHOC ELECTRIQUE NE PAS OUVRIR</p> </div> </div> <p style="font-size: small; text-align: center;">CAUTION: TO REDUCE THE RISK OF ELECTRIC SHOCK DO NOT REMOVE COVER (OR BACK) NO USER-SERVICEABLE PARTS INSIDE REFER SERVICING TO QUALIFIED PERSONNEL</p> <p style="font-size: x-small; text-align: center;">ATTENTION: POUR EVITER LES RISQUES DE CHOC ELECTRIQUE: NE PAS ENLEVER LE COUVERCLE, AUCUN ENTRETIEN DE PIECES INTERIEURES PAR L'USAGER, CONFIER L'ENTRETIEN AU PERSONNEL QUALIFIE. AVIS: POUR EVITER LES RISQUES D'INCENDIE OU D'ELECTROCUTION, N'EXPOSEZ PAS CET ARTICLE A LA PLUIE, OU A L'HUMIDITE</p>	<div style="display: flex; flex-direction: column; align-items: center;"> </div> <p style="font-size: x-small;">The lightning flash with arrowhead symbol within an equilateral triangle is intended to alert the user to the presence of uninsulated dangerous voltage within the product's enclosure, that may be of sufficient magnitude to electric shock to persons. Le symbol clair avec point de flèche à l'intérieur d'un triangle équilatéral est utilisé pour alerter l'utilisateur de la présence à l'intérieur du coffret de voltage dangereux non isolé d'ampleur suffisante.</p> <p style="font-size: x-small;">The exclamation point within an equilateral triangle is intended to alert the user of the presence of important operating and maintenance (servicing) instructions in the literature accompanying the appliance. Le point d'exclamation à l'intérieur d'un triangle équilatéral est employé pour alerter les utilisateurs de la présence d'instructions importantes pour le fonctionnement et l'entretien (service) dans le livret d'instruction accompagnant l'appareil.</p>
---	---

Important Safety Instructions

1. Read this manual thoroughly before using this unit.
2. Keep this manual for future reference.
3. Take notice of and comply with all warnings included in the user's manual or indicated on the appliance.
4. Follow all instructions included in this manual.
5. Do not expose this unit to rain or moisture. Avoid having water or other liquids spilled on this unit.
6. When cleaning the cabinet or other parts of this appliance, use only a dry or slightly damp soft cloth.
7. Do not block any ventilation openings or interfere with the proper ventilation of this unit. Install in accordance with the manufacturer's instructions.
8. Do not use or store near any heat sources such as radiators, heat registers, stoves, or other heat-producing appliances.
9. Do not interfere with the safety purpose of the polarized or grounding-type plug. A polarized plug has two blades with one wider than the other. A grounding-type plug has two blades and a third grounding prong. These are designated for your safety. If the provided plug does not fit into your outlet, consult an electrician.
10. Protect the power cord from being walked on or otherwise damaged by items placed on or against them. Particular attention should be given to the plugs, receptacles, and the point where the cord exits the appliance.
11. To avoid the risk of electrical shock, do not touch any exposed wiring while the unit is in operation.
12. Only use attachments/accessories specified by the manufacturer.
13. Unplug this unit and all connected electrical equipment during lightning storms or when left unused a long period of time.
14. Refer all servicing to qualified service personnel. Servicing is required when the appliance has been damaged in any way or fails to operate normally.

WARNING: To reduce the risk of fire or electric shock, do not expose this unit to rain or moisture

Contents

- Introduction 1
 - What's in the package 1
- Features 2
- Top Panel Layout 3-6
- Front Panel Layout 7
- Rear Panel Layout 7
- Getting Started
 - Connecting Your Qcon Pro Controller 8
- iMap™ Software for Mac OS X 9
 - Installing iMap™ Software for Windows 9-10
- iMap™ Qcon Pro software panel 11
- Firmware upgrade 11
- Qcon Pro Connections 12
- Qcon Pro Connections
 - (Umix 1008 Satellite installed) 13
- Specifications 14
- Services 15



Introduction

Thank you for purchasing the ICON Qcon Pro Midi/Audio control surface. We sincerely trust this product will provide years of satisfactory service, but if anything is not to your complete satisfaction, we will endeavor to make things right.

In these pages, you'll find a detailed description of the features of the Qcon Pro, as well as a guided tour through its front and side panels, step-by-step instructions for its setup and use, and full specifications.

You'll also find a warranty card enclosed - please don't forget to fill it out and mail it so that you can receive online technical support at: www.icon-global.com. And so we can send you updated information about these and other ICON products in the future. As with most electronic devices, we strongly recommend you retain the original packaging. In the unlikely event the product must be returned for servicing, the original packaging (or reasonable equivalent) is required.

With proper care and adequate air circulation, your Qcon Pro will operate without any trouble for many years. We recommend that you record your serial number in the space provided below for future reference.

Please write your serial number here for future reference:

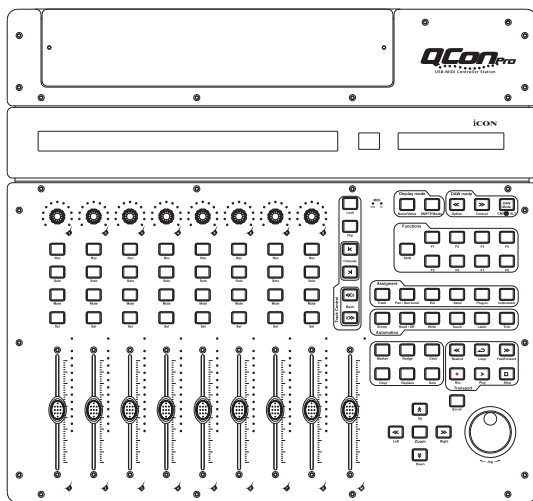
Purchased at:

Date of purchase:

What's in the package?

- Qcon Pro USB-MIDI Controller x 1pc.
- Software CD / User' Manual x 1
- Quick Start Guide x 1
- USB2.0 Cable x 1
- AC adaptor x 1pc

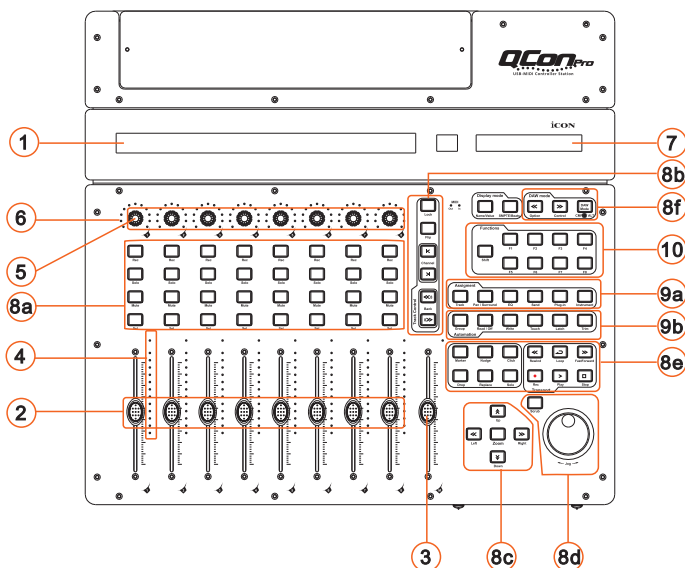
Features



- 8 touch-sensitive motorized channel faders
- 12-segment LED channels level metering
- 1 touch-sensitive motorized fader for master channel
- 8 x dual function encoder knobs (Enter & rotate)
- 11-segment LED surrounding the encoders to indicate the rotating position.
- Large backlit LCD to display channel name, control values etc. for each channel
- 12-segment LED display showing time location of your project in either SMPTE or BBT format.
- 18 assignable buttons
- Jog wheel shuttle for fast search and control
- Illuminated buttons for each channel including Rec-enable, Solo, Mute, Select and Monitor
- 6 illuminated transport buttons including Play, Stop, Rec, Rewind, Fast forward and Loop
- Illuminated zoom key with 4 direction keys
- 9 illuminated assignable MIDI function buttons
- Expandable to 32-channels control surface with 3 units of Qcon EX.
- Expansion slot for ICON's "Umix" series USB audio interface card
- User A & User B 1/4" TRS connectors for connecting with pedals
- Class-compliant with Windows XP, Vista (32-bit), Windows 7 (32-bit & 64-bit), and Mac OS X (IntelMac)
- USB 2.0 high speed connectivity
- Mackie control build-in for Cubase, Nuendo, Samplitude, Logic Pro and Ableton Live.
- Mackie HUI protocol build-in for Pro Tool.
- User self-define mode (MIDI Learn) for other DAW such as Sonar.
- Firmware upgrade available simply via USB connection and iMap software.
- Template labels are included for difference popular DAW such as Cubase, Nuendo, Samplitude, Logic Pro and Ableton Live .
- Robust aluminum and metal casing with Kensington lock port

Top Panel Layout

Note: Function operates slightly difference between DAWs. Please refer to your DAW manual for each function and overlap the provided labeling template according to your current using DAW. The following description is based on the functions that operate in Apple Logic™.



① LCD backlit display

The two-line backlit LCD display shows the parameter values as you adjust them and also provides feedback about channel selections, operating modes, and more.

② Channel faders

The eight 100mm motorized faders are generally used for controlling the track volume of your DAW. Depending on your DAW, you may use the “Flip” button to switch the function of these faders to change other settings. They are all touch sensitive to allow override automation the moment you touch a fader. Also, they are motorized; they will automatically move to reflect the current level of the selected channels in your DAW application. Any automation recorded in a project will be reflected by the fader positions. Any parameter adjustments made with these faders will be displayed directly above on the LCD display.

③ Master fader

This 100mm motorized fader operates the same as the other 8 faders. It controls your DAW software's master channel fader. Any parameter adjustments made with this fader will be displayed directly above on the LCD display.

④ Channel level metering

The 12-led showing the associated channel level.

⑤ Dual function encoders

The dual functioned encoder acting as a push-button and a rotary control. When an encoder is pressed, it may be used to change modes of operation or to change what appears in the display above the channel strips. When an encoder is rotated, depending on its assigned function, it can be used to adjust a channel's pan, send level, or plug-in parameters.

⑥ Encoder LED

The 11-LED surrounding the encoder lights up to indicate the relative position of the rotation without having to look at your computer.

⑦ Time display

This display shows the time location of your project in either SMPTE or BBT format.

⑧ Control buttons

8a) Recording channel control buttons section

REC buttons - Activate and deactivate the recording state of the associated channel. The switch will light red when the channel is armed.

SOLO buttons - Turn On and Off the solo state of the associated channel. The switch will light green when the channel solo state is on and other channels will be muted. You could solo multiple channel by pressing SOLO buttons on additional channels.

MUTE buttons - Activate and deactivate the mute state of the associated channel. The switch will light blue when the channel is muted.

SEL buttons - The SEL buttons activate the associated channels in the DAW software in order to perform a specific operation (for example, when adjusting EQ with the ASSIGNABLE ENCODERS, the SEL switch will be used to choose the channel you want to adjust). When a channel is selected, the associated SEL switch's red LED will light up.

8b) Motorized fader control buttons section

LOCK button - Activate to lock all motorized faders.

FLIP button - Press the FLIP button to swap the parameter settings of the motorized faders and the rotary encoder knobs.

UP button - Shift "one" channel up for all faders (except the master channel).

DOWN button - Shift "one" channel down for all faders (except the master channel).

BANK UP button - Shift "eight" channels up for all faders (except the master channel).

BANK DOWN button - Shift "eight" channels down for all faders (except the master channel).

8c) Zoom control buttons section

ZOOM button - The ZOOM button is typically used in conjunction with the ARROW buttons described below to zoom in and out within windows in the DAW application.

UP button - The UP button is used to navigate (up movement) through the Graphical User Interface (GUI) of the DAW application.

DOWN button -The DOWN button is used to navigate (down movement) through the Graphical User Interface (GUI) of the DAW application.

LEFT button - The LEFT button is used to navigate (left movement) through the Graphical User Interface (GUI) of the DAW application.

RIGHT button - The RIGHT button is used to navigate (right movement) through the Graphical User Interface (GUI) of the DAW application.

8d) Jog wheel section

Jog wheel -The jog wheel is used for various purposes specific to the DAW application, including shuttle and scrubbing functions.

Scrub button -The SCRUB button is typically used in conjunction with the jog wheel to scrub selected audio tracks for editing and auditioning purposes.

8e) Transport control buttons section

PLAY button -Activate the play function of the DAW.

STOP button -Activate the stop function of the DAW.

REC button -Activate the record function of the DAW.

REWIND button -Activate the rewind function of the DAW.

FAST FORWARD button - Activate the fast forward function of the DAW.

LOOP button -Activate the loop function of the DAW.

Marker button -Toggle small Marker mode.

Nudge - Toggle small Nudge mode.

Click - Toggle playback or record metronome click.

Drop - Toggle Drop.

Replace - Toggle Replace.

Solo - Toggle track solo (of selected track).

8f) DAW Selector section

Qcon Pro has built-in Mackie Control protocols & HUI for different DAW such as Cubase™, Samplitude™, Ableton Live™, Logic Pro™ and ProTool™. By selecting the correct DAW and Mackie control (HUI) protocol, Qcon Pro has automatically mapped the major functions and work seamlessly with that DAW.

<< / >> buttons -These arrow buttons are used to scroll through the DAW list. The name of the DAW will display on the LCD.

DAW button - Press to enter the DAW selection.

To change your Qcon Pro DAW mode, turn off and on the power switch to enter the DAW selection mode. Select your desired DAW from the list with the "<<" / ">>" buttons.

Tips: DAW button could not be activated if a DAW software is running.

(Note: We will update Qcon Pro firmware from time to time to support additional DAW apart from the current existing list. Please check our official website to download and upgrade your Qcon Pro firmware).

Tips: Qcon Pro will memorise your last selected DAW mode and re-enter the same mode a few seconds after it has been switched on. (i.e. DAW mode selection is not needed if the last mode is being used.)

⑨ Sub-control buttons

This section of control buttons varies in different DAWs. Qcon Pro is based on Logic™ for the settings.

(Note: For different DAWs the labeling may not be perfectly matched.)

9a) Assignment section

TRACK button -Activate the track parameters of the software.

PAN/EQ/Send/Plug-in/Instrument buttons -These buttons are used to activate the corresponding effect function of the DAW. They are typically used in conjunction with the rotary encoder knobs. Press the button, its light will turn on, and then rotate the rotary encoder knob to adjust the value, which will display on the LCD directly above.

9b) Automation section

GROUP - Press to enter “Group” edit mode.

READ/Off button - Press the READ button to activate the read function of the current audio track.

WRITE button - Press the WRITE button to activate the write function of the current audio track.

TOUCH button - Press to set selected track's automation to Touch.

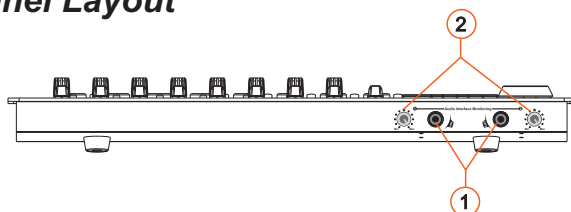
LATCH - Press to set selected track's automation to Latch.

TRIM - Currently unassigned.

⑩ User-defined control buttons

This section of control buttons is user-defined in Mackie control mode (HUI mode). You may set their parameters according to your personal needs. PVC labeling mask is included for noting the set parameters.

Front Panel Layout



① Monitor HP 1 / HP 2 headphone outputs

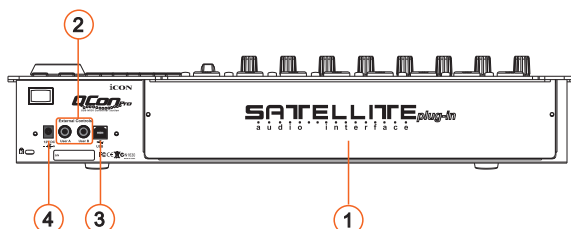
Each of these output jacks accepts a standard 1/4" stereo TRS headphone connector.

② Monitor HP 1 / HP 2 headphone level controls

Each of these potentiometers controls the output level of its associated headphone output.

(Note: These outputs and control knobs will not be functional unless Umix 1008 Satellite USB2.0 audio interface add-in card installed.)

Rear Panel Layout



① Umix1008 Satellite 10x8 (24-bit/192kHz) USB2.0 high-speed audio interface add-in card slot

Expansion slot for connecting Umix 1008 Satellite 10x8 (24-bit/192kHz) USB2.0 high-speed audio interface add-in card.

② User A / User B 1/4" TRS connectors

These 1/4" TRS connectors are able to connect to foot pedals to activate your selected functions. To set their parameters, select USER A and USER B parameters at Mackie control mode.

③ USB port

Connect your Qcon Pro to your Mac/PC via this USB port.

④ 12V/5A power adaptor

Connect the provided power adaptor here.

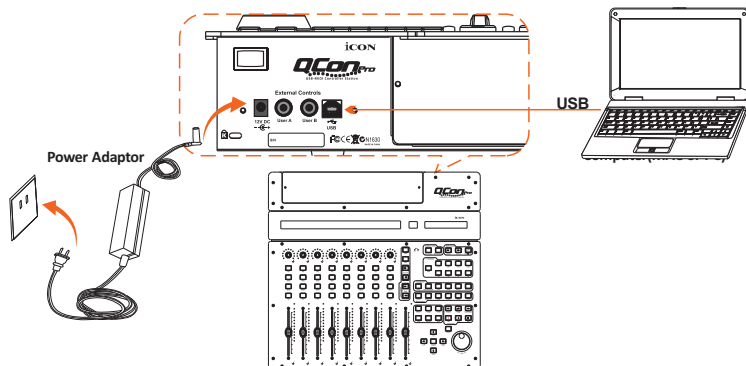
(Note: Qcon Pro is not able to work without the provided power adaptor connected. The USB bus power is not able to provide sufficient power supply for Qcon Pro.)

Getting Started

Connecting Your Qcon Pro Controller

① Connect the Qcon Pro to your Mac/PC via the USB port.

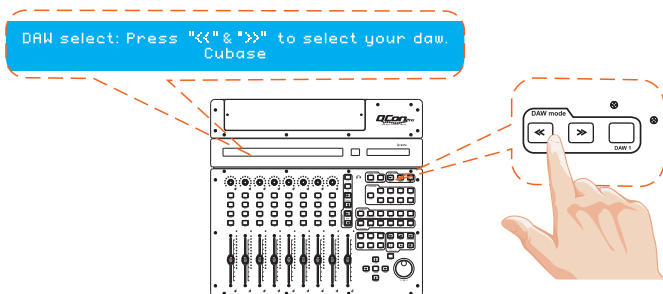
Choose a USB port on your Mac/PC and insert the wide (flat) end of the USB cable. Connect the cable's other end to the Qcon Pro. Your Mac/PC should automatically “detect” the new hardware and notify you that it is ready to use.



② Select the DAW at Qcon Pro

Press <</>> to scroll through the DAW list after pressed the “DAW” button to make the selection.

Tips: Qcon Pro will memorise your last selected DAW mode and re-enter the same mode a few seconds after it has been switched on. (i.e. DAW mode selection is not needed if the last mode is being used.)

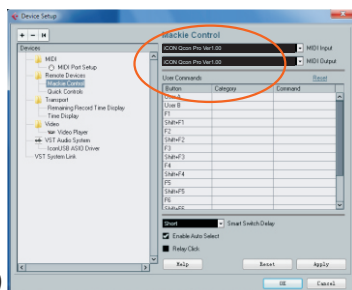


③ Setup your DAW

Activate the ICON Qcon Pro controller in your DAW or MIDI software using “MIDI Setup” or “MIDI Devices”.

For Logic™, Cubase™ and Nuendo™, choose Mackie Control at the “Device List”.

(Note: Every application does this a little different, so refer to your software user manual for the settings.)



iMap™ Software for Mac OS X

Please follow the procedures below step-by-step to launch your iMap™ software to Mac OS X

- ① Insert the Utility CD in your CD-Rom and double click "Qcon Pro iMap" icon.



Tips: By "drag and drop" the "Qcon Pro iMap" icon into the "Applications" folder, you could create a "iMap" shortcut on your Mac's desktop.

Installing iMap™ Software for Windows

Please follow the procedures below step-by-step to install your iMap™ software.

- ① Turn on your PC.
- ② Insert the Utility CD in your CD-Rom

After you have inserted the CD into your CD-Rom, an installation screen should appear as shown in diagram 1; click "iMap™ installation".

(Note: If the installation screen not appear automatically go to the CD folder and double click on "Setup")



Diagram 1

- ③ Setup Wizard appear

Setup wizard appears, please click "Next"

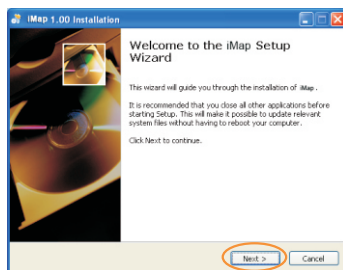


Diagram 2

④ Choose Install Location

Choose your preferred install location for iMap™ or use the default location and click "Next"

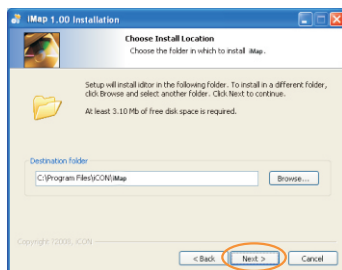


Diagram 3

⑤ Select shortcut

Select the start menu folder in which you would like to create the iMap™ shortcut. Then click "Next"

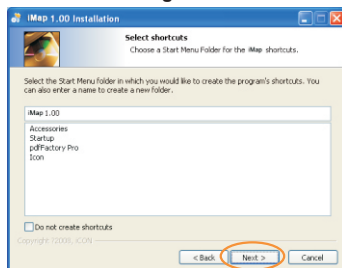


Diagram 4

⑥ Create a shortcut on your desktop

Please untick the box if you do not want to place a shortcut icon on your desktop for iMap™, otherwise click "Next"

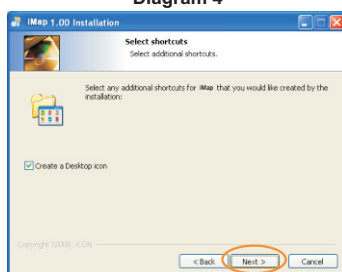


Diagram 5

⑦ iMap™ started to install

The iMap™ installation has now started, wait for it to finish. Then click "Finish"

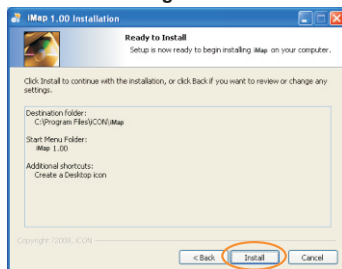


Diagram 6

⑧ Installation finished

Click "Finish" to complete the iMap™ software installation.

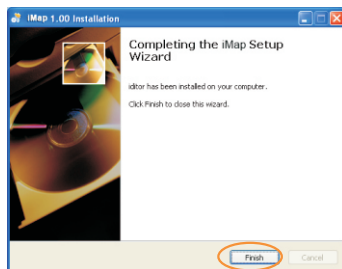


Diagram 7

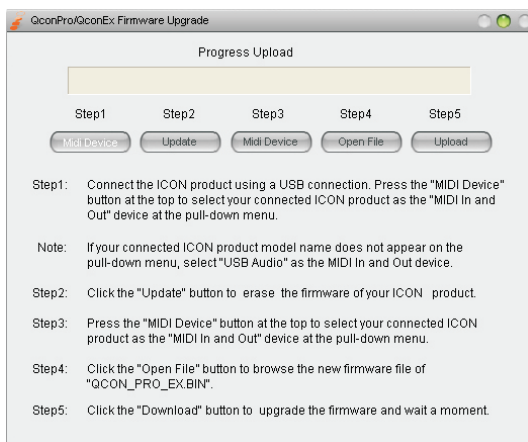
iMap™ Qcon Pro software panel

① “Firmware Upgrade” button

Click this button to enter into the firmware upgrade window for Qcon Pro. Please refer to P.11 for the firmware upgrade procedure.



Firmware upgrade



Step 1: Connect the ICON product using a USB connection. Press the “MIDI Device” button at the top to select your connected ICON product as the “MIDI In and Out” device at the pull-down menu.

Note: If your connected ICON product model name does not appear on the pull-down menu, select “USB Audio” as the MIDI In and Out device.

Step 2: Click the “Update” button.

Step 3: Press the “MIDI Device” button at the top to select your connected ICON product as the “MIDI In and Out” device at the pull-down menu.

Step 4: Click the “Open File” button to browse the new firmware file.

Step 5: Click the “Upload” button to upload the firmware.

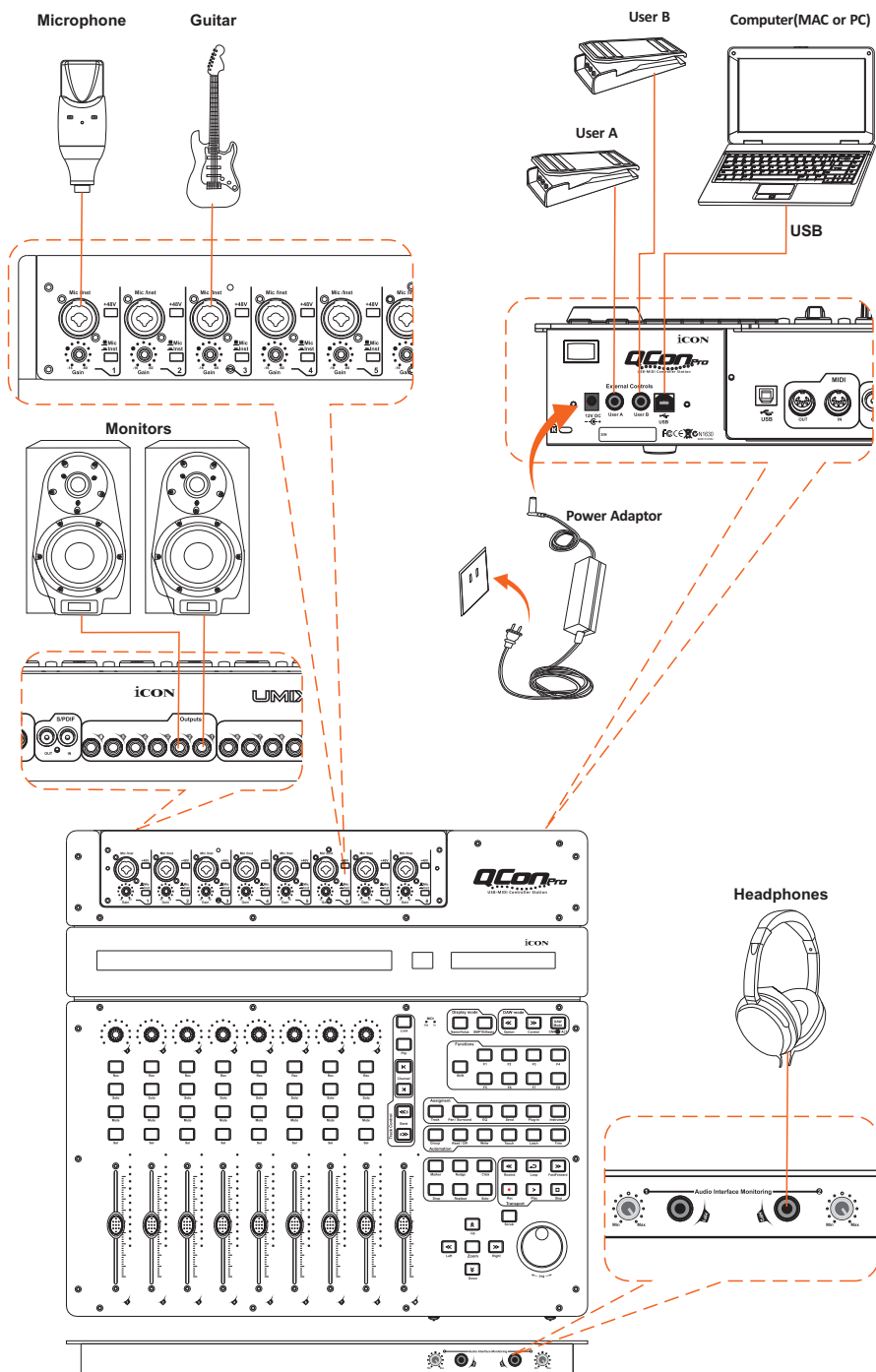
Warning: The firmware upload process “MUST” be completed and not be interrupted during the file uploading, otherwise the firmware may not be rewritten again.

QCON Pro
USB-MIDI Controller Station



Qcon Pro Connections(Umix 1008 Satellite installed)

Qcon Pro
 1008 1008 1008 1008 1008 1008
 USB-MIDI Controller Station



Specifications

Connector:----- USB connector (standard type)

Power supply:-----12V/6A DC

Current consumption:

Qcon Pro only -----.3A or less

Qcon Pro with Umix Satellite audio interface --.6A or less

Weight:----- 7.0kg (15.4lb)

Dimensions: -----.510(L) X 475(W) X 82(H)
20.1”(L) x 18.7”(W) x 3.2”(H)



Services

If your Qcon Pro needs servicing, follow these instructions.

1. Ensure the problem is not related to operation error or external system devices.
2. Keep this owner's manual. We don't need it to repair the unit.
3. Pack the unit in its original packaging including end card and box. This is very important. If you have lost the packaging, please make sure you have packed the unit properly. ICON is not responsible for any damage that occurs due to non-factory packing.
4. Please contact your local distributor for servicing. For your local distributor address and contact information, please check our official website at the below link:

<http://www.icon-global.com/Com.aspx>

Or contact our branch office/service center at:

Europe Service Center:

SCS

Servicecenter-Siedler

Am alten Bach 18

41470 Neuss

Phone: +49 2137 7864212

Email: info.euro@icon-global.com

ASIA OFFICE:

ICON (Asia) Corp.

Unit 807-810, 8/F., Sunley Centre,

No. 9 Wing Yin Street, Kwai Chung, NT.,

Hong Kong.

Email: info.asia@icon-global.com

5. For additional update information please visit our website at:
www.icon-global.com



iCON®
www.icon-global.com
info@icon-global.com

